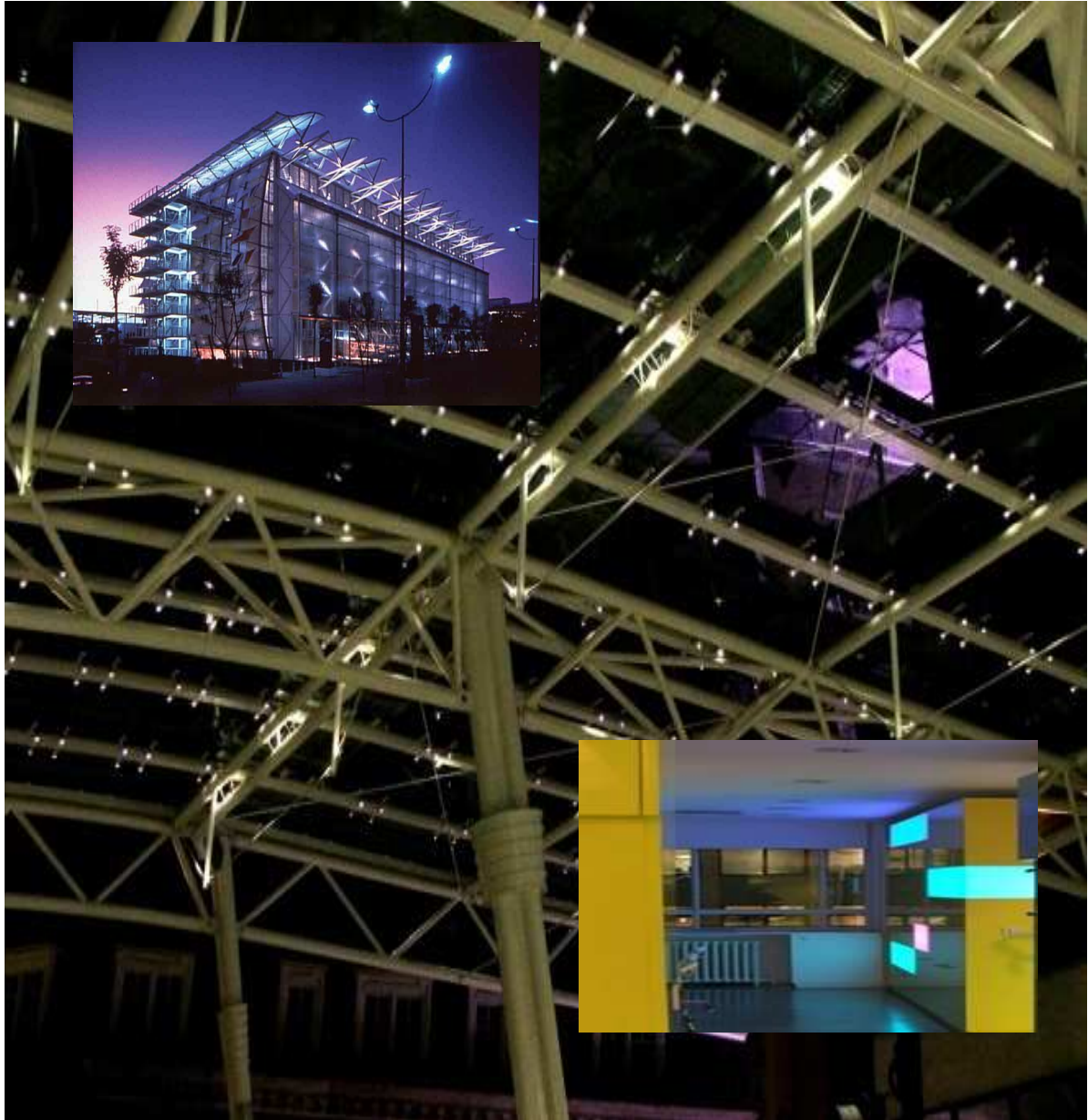


LIGHTING **bastable** SERVICES



COMPANY PROFILE

# CONTENTS

Page 2.....	Contents Page.
Page 3.....	Introduction.
Page 4.....	Design Team.
Page 5 - 6.....	Associate Profiles
Page 7.....	Specialist Lighting Consultant – SERVICES
Page 8 - 11.....	Completed Projects
Page 12.....	Sample Client List

.... OTHER SERVICES

## Company Profile

**bastable LIGHTING  
SERVICES**

3 Harraton House, Church Lane, Exning, Newmarket, Suffolk, England. CB8 7HF  
Tel: 0044(0)1638 578666 Fax: 0044(0)1638 578667

# INTRODUCTION

**BASTABLE LIGHTING SERVICES** welcome this opportunity to present our Lighting Design Company and the services we provide.

Our team of experienced designers and engineers have been influential in the realisation of many of the most important breakthroughs in modern lighting design and application.

**Bastable Lighting Services** are fully conversant with the range of lamps and controls available in the world market and have vast experience in the realising of ambitious projects and architectural vision.

Our Three Senior Associates have each combined artistic and engineering training in their lighting discipline for many years.

We have been involved in significant endeavours to improve energy efficiency in lighting product and in the facility management of project long term viability, through strict maintenance programs. We are therefore well qualified to apply the most appropriate lighting products to integrate with superior interior and exterior treatments and details, while ensuring it is a practical solution which maintains a high profile.

**Bastable Lighting Services** has always provided lighting consultancy in both luminaire design and in project application of light, where we have been responsible for many ground breaking developments. This includes involvement in the design of the first batwing luminaires for TM6 office lighting, the design for the first Fibre Optic Lightsource (utilising the Metal Halide Lamp) and a significant influence in the development of LED technology, particularly in long life and emergency lighting. We are well versed in all commercial sectors of light application, having completed many projects in Retail, Office, Hotel, Architectural, Domestic, Street, Transport, Landscape, Theatre and Live performance lighting.

Our Group experience and current areas of study are well suited to the technical requirements outlined in your brief. The efficient transport of light through fibre optics carefully embedded in claddings and the viability of LED as a productive source of light, rather than simple decoration, are currently at the forefront of our works. We are particularly skilled in the science of Light transmission through glass and other refractive and diffuse materials.

A significant breakthrough was made during a recent project in Woking, where we designed and oversaw installation of a 600 square metre canopy consisting entirely of Solar panels. The panels supply enough energy to drive an integrated fibre optic and LED combined system with 1100 light points and also supply electricity back to the local grid network throughout the day.

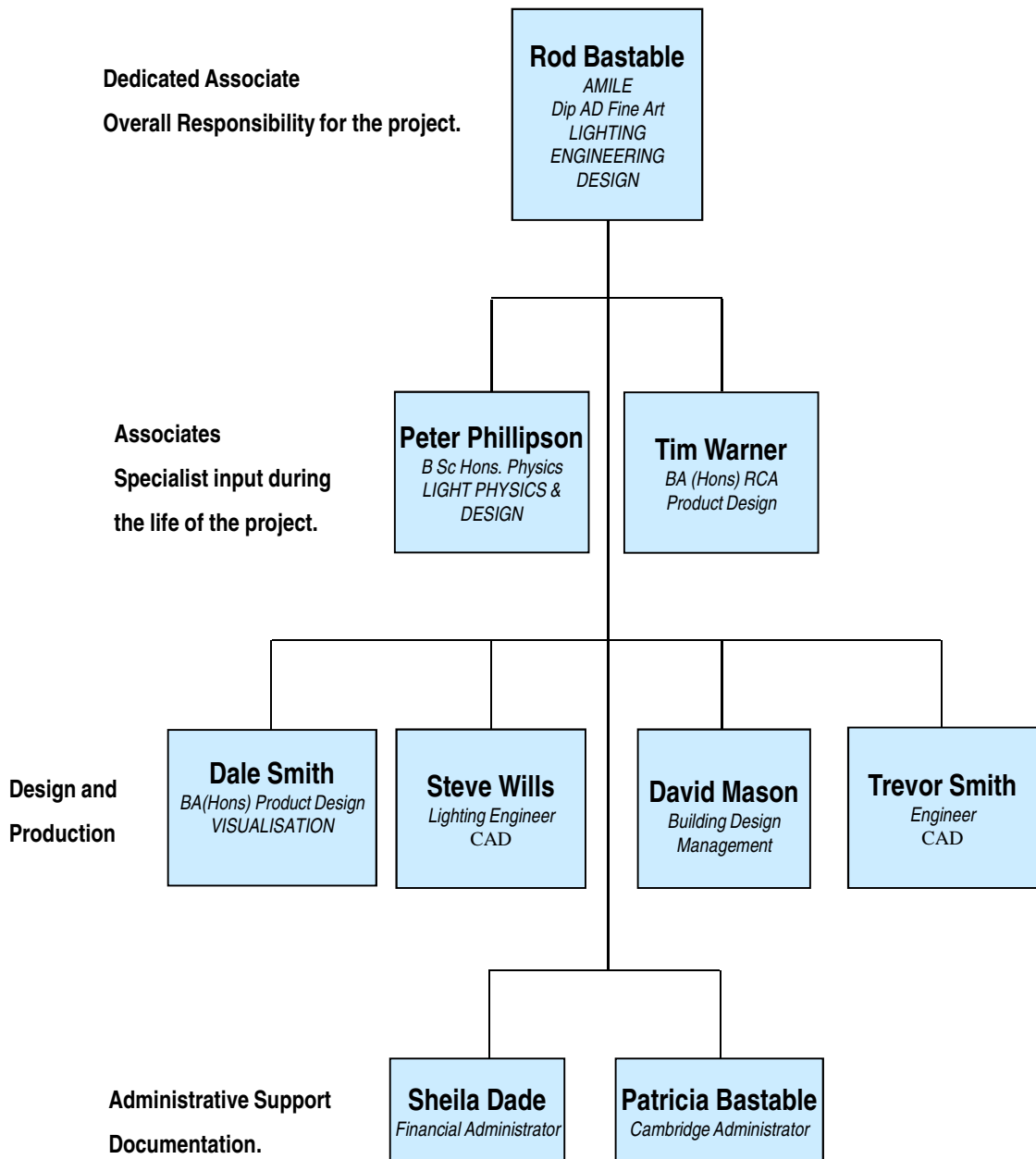
**bastable LIGHTING SERVICES**

3 Harraton House, Church Lane, Exning, Newmarket, Suffolk, England. CB8 7HF  
Tel: 0044(0)1638 578666 Fax: 0044(0)1638 578667

# DESIGN TEAM

This chart indicates **BASTABLE LIGHTING SERVICES'** human resources.

Subject to our confirmed appointment on a project, an associate and a designer are mobilised, with appropriate administrative support.



**bastable LIGHTING SERVICES**

3 Harraton House, Church Lane, Exning, Newmarket, Suffolk, England. CB8 7HF  
Tel: 0044(0)1638 578666 Fax: 0044(0)1638 578667

## ROD BASTABLE (ARA) - Associate - Project Leader (CV)

My beginnings were in Fine Art. I trained at Winchester, completing my Dip.AD (Fine Art) studies in 1972. During the next six years I enjoyed a prolific period of painting and exhibiting landscapes and portraiture in a thorough exploration of space and colour.

In 1978 I began my involvement with lighting, when I was asked to work on a series of major commercial office buildings: EMI Building, The World Trade Centre and Baring Bros – London projects, Cairo Sky Tower, Hong Kong Exchange and many more. Probably the largest undertaking in that capacity was on Terminal 4, Heathrow Airport, London, where over thirty bespoke lighting fixtures were designed to integrate with the structure.

In 1982 I began work on a large number of Retail lighting projects. This opened up a whole new creative area, working with most of the major high street chains, specifying luminaries to schemes for up to 300 stores in roll out programmes for each brand. This included Top Shop, Top Man, Dorothy Perkins and Evans' and this led into Debenhams Stores and the franchises and the beginnings of my work in Dubai in 2001.

My artistic interests had continued and I had been successful in exhibiting at the Royal Academy in 1985. In 1986 I created a design consultancy company and built the practice, working with most mainstream lighting companies, architects and consultants. During this period my team were designing and building bespoke lighting for projects in Hong-Kong, Singapore, USA, Norway, Sweden, Malaysia, Australia and in the UK, all with energy and maintenance recommendations as major considerations.

In 1988 I designed and produced the first, fully data supported, Fibre Optic Lighting system for the world market, again in the interest of energy and maintenance efficiency. I have worked in the development of LED lighting for almost ten years in order to stay centred on low energy, long life product with a 'GREEN' emphasis. Both technologies are key to realising LEED visions for energy efficiency.

**Now, after 30 exciting years of passionate project work, Art and Light have become a combined entity in my professional life and that is why I believe that my company can deliver; carefully considered, defined space, by the application of quality lighting, in the form of daylight or applied artificial illumination. This creative input is supplied backed by the Knowledge and application of the appropriate efficient technologies, ensuring due responsibility to the Environment.**



**bastable LIGHTING SERVICES**

3 Harraton House, Church Lane, Exning, Newmarket, Suffolk, England. CB8 7HF  
Tel: 0044(0)1638 578666 Fax: 0044(0)1638 578667

## PETER PHILLIPSON BSc Hons Physics. Associate

Peter's future in lighting was established by the age of 13 as a result of extra curricular activities in Theatre. While working in the evenings at the Gordon Craig Theatre in Stevenage, he began lighting dramatic productions and professional events such as fashion shows.

In 1979 he began his professional career with Phosco Limited, where he trained in photometric design under the direction of the renowned Dr. Harold Pfitzmann. He went on to control the Laboratory in Photometric, Thermal and IP testing.

Continuing work in the Theatre at night, in Stevenage, Manchester & London, lighting hundreds of performances of plays, jazz & orchestral concerts, he learned about the significant interplay and dichotomy of the aesthetics of lighting and the science of lighting calculation. We believe that every project requires an appropriate balance of the two disciplines.

During the following years, he worked with many major lighting companies and from 1986-89, he completed a full time degree in Physics and several professional courses, sponsored by Thorn Lighting. Having gained his BSc Physics at Queen Mary College, University of London, he went on to design for Thorn's Major Projects team designing for special applications such as, velodromes, tunnels, sports fields and exhibitions.

From 1991, he moved back towards the artistic application of light working as an independent, freelance designer, bridging the gap between Theatre and Architectural design. This resulted in a considerable amount of work in the area of Museum and Gallery as well as the more conventional. While working in this capacity, he regularly wrote for industry publications.

He began working with Bastable Lighting Services in 1994 , forming an Associate base, able to handle any type of project within the broad based Lighting Industry. We have the diversity of talent and skills to tackle any visionary project. What is more, we are committed to a quality of application which is in our roots and which does not afford us the acceptance of anything less than our best.

As a committee member of CIBSE, Peter is often asked to advise companies on lighting product viability and he wrote the new CIBSE Part L standard on Lighting Commissioning which is part of the UK version of LEED practice. At **BLS**, It is our constant goal to be in the forefront of the technological developments in our industry and to bring best practice to all of our projects.



**bastable LIGHTING SERVICES**

3 Harraton House, Church Lane, Exning, Newmarket, Suffolk. England. CB8 7HF  
Tel: 0044(0)1638 578666 Fax: 0044(0)1638 578667

# TYPICAL DESIGN SERVICES OFFERED BY THE PRACTICE

**BASTABLE LIGHTING SERVICES** are able to provide a comprehensive range of lighting related services as set out below.

- Artificial lighting solutions for all internal and external parts of the built environment and open space.
- Daylight / Sunlight utilisation (internal & external spaces).
- Controlling / redirecting of available natural light..
- Light Art commissions.
- Design of temporary Event Lighting. Exhibitions, Live shows etc.
- Resolving of environmental issues such as Light Pollution . (cause, effect and remedy).
- Lighting related energy analysis and recommendations.
- Arbitration Services.
- Lighting related health and safety.



## SOME COMPLETED PROJECTS - 1



The Bellagio – Las Vegas



Expo - Seville



Woking Canopy



Pilkington's HQ – Wigan



BALI – Four Seasons Hotel Resort



**bastable LIGHTING SERVICES**

3 Harraton House, Church Lane, Exning, Newmarket, Suffolk, England. CB8 7HF  
Tel: 0044(0)1638 578666 Fax: 0044(0)1638 578667



## COMPLETED PROJECTS - 2



BALI – Four Seasons Hotel Resort + Atria



Britain's first LED ceiling - Stevenage



Britain's first LED ceiling - Stevenage



Corporate Retail - Truro

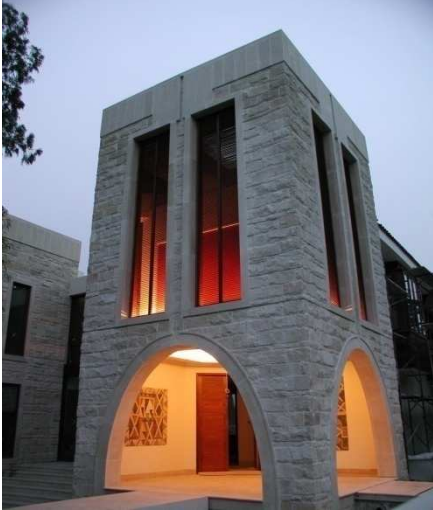


Expo 2000 – Dutch Pavilion

**bastable LIGHTING SERVICES**

3 Harraton House, Church Lane, Exning, Newmarket, Suffolk, England. CB8 7HF  
Tel: 0044(0)1638 578666 Fax: 0044(0)1638 578667

## COMPLETED PROJECTS - 3



CYPRUS – Private residence + Interiors



**bastable LIGHTING SERVICES**

3 Harraton House, Church Lane, Exning, Newmarket, Suffolk, England. CB8 7HF  
Tel: 0044(0)1638 578666 Fax: 0044(0)1638 578667

## COMPLETED PROJECTS - 4



Hong Kong Telecom



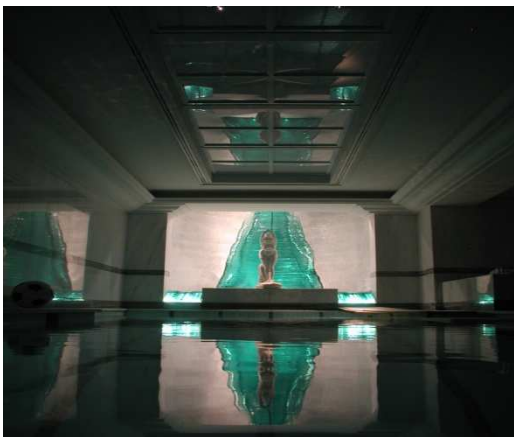
Brodie & Stone – London



Brodie & Stone – London



Lombard Street - London



Private Dwelling - London



Private Dwelling - London

**bastable LIGHTING SERVICES**

3 Harraton House, Church Lane, Exning, Newmarket, Suffolk, England. CB8 7HF  
Tel: 0044(0)1638 578666 Fax: 0044(0)1638 578667



# SAMPLE CLIENTS LIST

**BASTABLE LIGHTING SERVICES** have worked with many of the worlds leading architects and designers. A few are listed below:-

## **Architects, Designers, Consultants :-**

- Fitch & Co
- Troughton & Mc Aslan
- Taylor Woodrow
- Ove Arup
- Saunders Design
- Sir Norman Foster
- WS Atkins Associates
- William Sale Partnership (WSP)
- Bovis Engineering
- Drake & Skull
- Matthew Hall
- Ford Higgins & Pole Associates
- Hopkins Associates
- Sir Richard Rogers
- Etc... Etc..

## **Projects include :-**

- Barclays Bank PLC
- Hong Kong Shanghi Bank
- Sun Alliance
- Canary Wharf
- Cairo - Sky Tower
- IBM Headquarters
- EMI Building
- Burton Group Retail (2000 + stores)
- Midland Bank
- Boots Chemist
- Hyatt Hotels
- Hilton Hotels
- British Rail
- Sun Life of Canada
- Nat West Bank
- Etc... Etc...

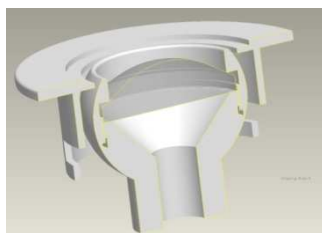
## SPECIAL PRODUCT DESIGN SERVICES

Bastable Lighting Services also supplies a Special Product Design Service for any bespoke luminaires which may be required on Corporate, Retail, Hotel, Office, Landscape or Hazardous Area projects.

These Designs can then be produced by a manufacturer of your choice while Bastable Lighting Services act as intermediaries to ensure quality and reliability are achieved.

All necessary certifications and approvals will be obtained on the clients behalf.

All exclusive design rights are able to be purchased or licensing agreed. Designs can be produced in the CAD format of the client's choice.





# SPACE VISUALISATION & WALK-THROUGH PRESENTATIONS



Bastable Lighting Services are expert in the production of the finest visualisations of the lit interior workspace. We are specialists in artificial and daylight calculation and ensure their accurate graphic representation,

Both the scientific and subjective sensory aspects of fact and illusion are brought together for best evaluation of finishes and their inclusion in the designed environment.

**bastable** LIGHTING SERVICES

3 Harraton House, Church Lane, Exning, Newmarket, Suffolk, England. CB8 7HF  
Tel: 0044(0)1638 578666 Fax: 0044(0)1638 578667

# WATER & GLASS MODELLING OPTICS



**bastable** LIGHTING SERVICES

3 Harraton House, Church Lane, Exning, Newmarket, Suffolk. England. CB8 7HF  
Tel: 0044(0)1638 578666 Fax: 0044(0)1638 578667